



# How and When to Move Your Workday Tenant to the Public Cloud

ERPA's Journey, Presented by ERPA



# Safe Harbor Statement

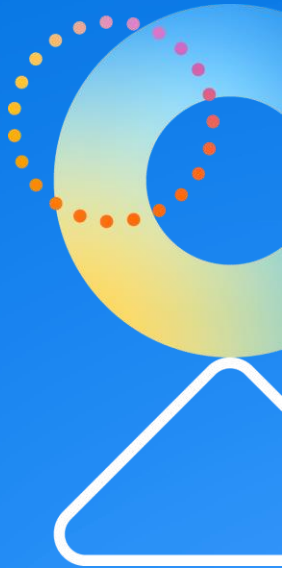
This presentation may contain forward-looking statements for which there are risks, uncertainties, and assumptions. Forward-looking statements may include any statements regarding strategies or plans for future operations; any statements concerning new features, enhancements or upgrades to our existing applications or plans for future applications; any projections of revenues, gross margins, earnings, or other financial items; and any statements of expectation or belief. Forward-looking statements are based only on currently available information and our current beliefs, expectations, and assumptions regarding the future of our business, future plans and strategies, projections, anticipated events and trends, the economy, and other future conditions. Because forward-looking statements relate to the future, they are subject to inherent uncertainties, risks, and changes in circumstances that are difficult to predict and many of which are outside of our control. Our actual results and financial condition may differ materially from those indicated in the forward-looking statements, and therefore you should not rely on any forward-looking statements that we may make. Further information on risks that could affect Workday's results is included in our filings with the Securities and Exchange Commission which are available on the Workday investor relations webpage: [www.workday.com/company/investor\\_relations.php](http://www.workday.com/company/investor_relations.php)

Workday assumes no obligation for, and does not intend to update, any forward-looking statements. Any unreleased services, features, functionality or enhancements referenced in any Workday document, roadmap, blog, our website, press release or public statement that are not currently available are subject to change at Workday's discretion and may not be delivered as planned or at all.

Customers who purchase Workday services should make their purchase decisions based upon services, features, and functions that are currently available.

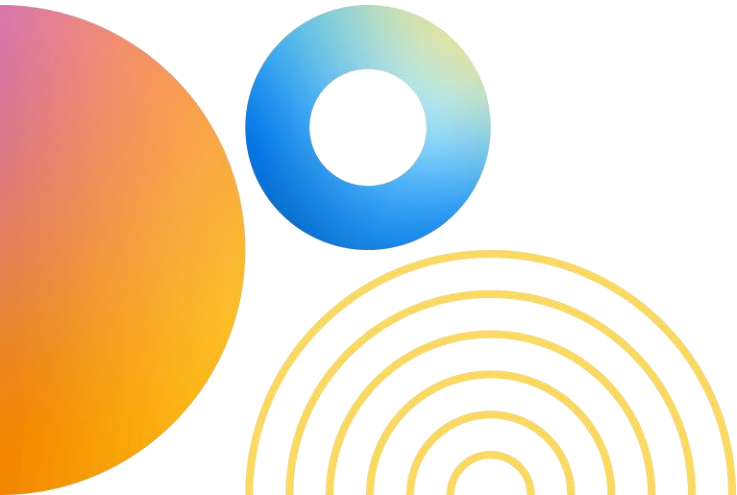
# Houman Immen

EVP – Workday Practice at ERPA



# Agenda

- 01 About ERPA
- 02 Why Move Workday to the Public Cloud
- 03 What to Expect - Cloud Migration Journey
- 04 Beyond the Migration
- 05 Closing Remarks



# About ERPA





## Dublin, Ohio

Headquarters



## 60+ Certified Experts

Average 7.5 Years Experience

Average 4.4 Certifications

Average 20+ Implementations



## Customer-Centric Services

Deployment Services

Payroll & Financial Bridge Support

Managed Services

Optimization Services

Reporting & Prism Analytics

AWS Cloud Migration

Extend Applications



## Industries Served

Public Sector/SLED

Financial Services

Healthcare & Pharmaceutical

Manufacturing & Logistics

Retail & Hospitality

Professional Services

Technology



# Our Perspective Brings Value



**Workday  
Customer**

Since  
2019



**Workday  
Partner**

Since  
2021



**AWS  
Partner**

Since  
2016



**Lessons  
Learned**

Drive Our  
Offerings



**Beyond  
Migration**

Unlock the  
Possibilities

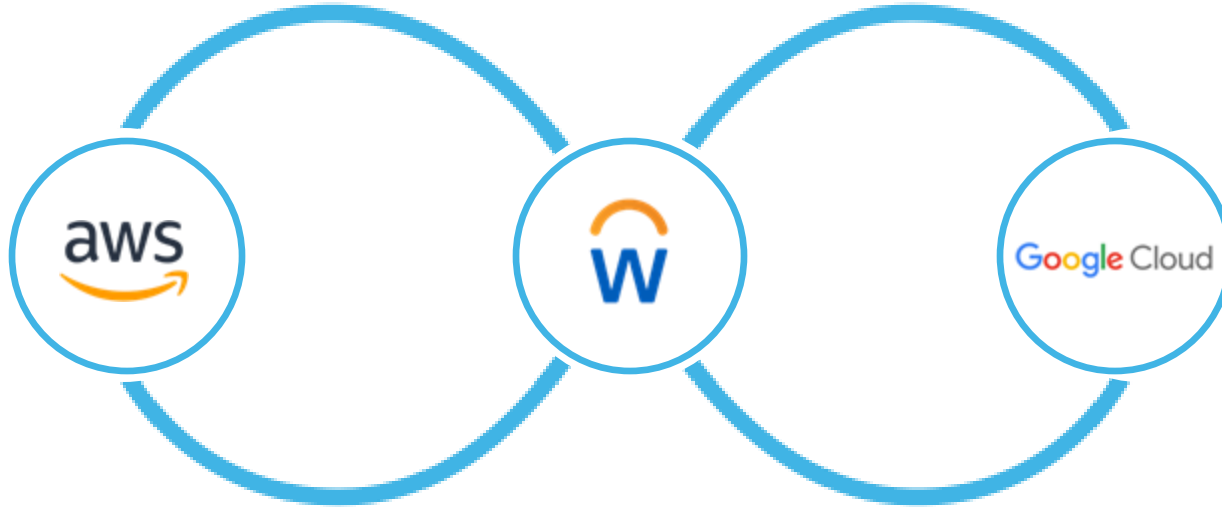
**Simplifying your journey to *and* through the Public Cloud**

# Why Move Workday to the Public Cloud





**Public Cloud is the preferred deployment option of Workday.**



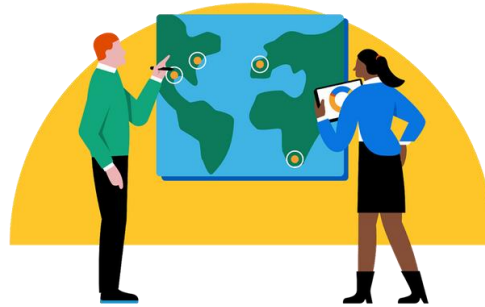
# Public Cloud Benefits for Customers



User Interface  
Zero Downtime



Advanced Infrastructure  
& Platform Services



Regional Maintenance  
Windows



Regulatory Compliance

# Workday on AWS is available Globally



Australia



Canada



Germany



Singapore



United States



# Take Advantage of Workday on AWS Marketplace

Now available through a private offer

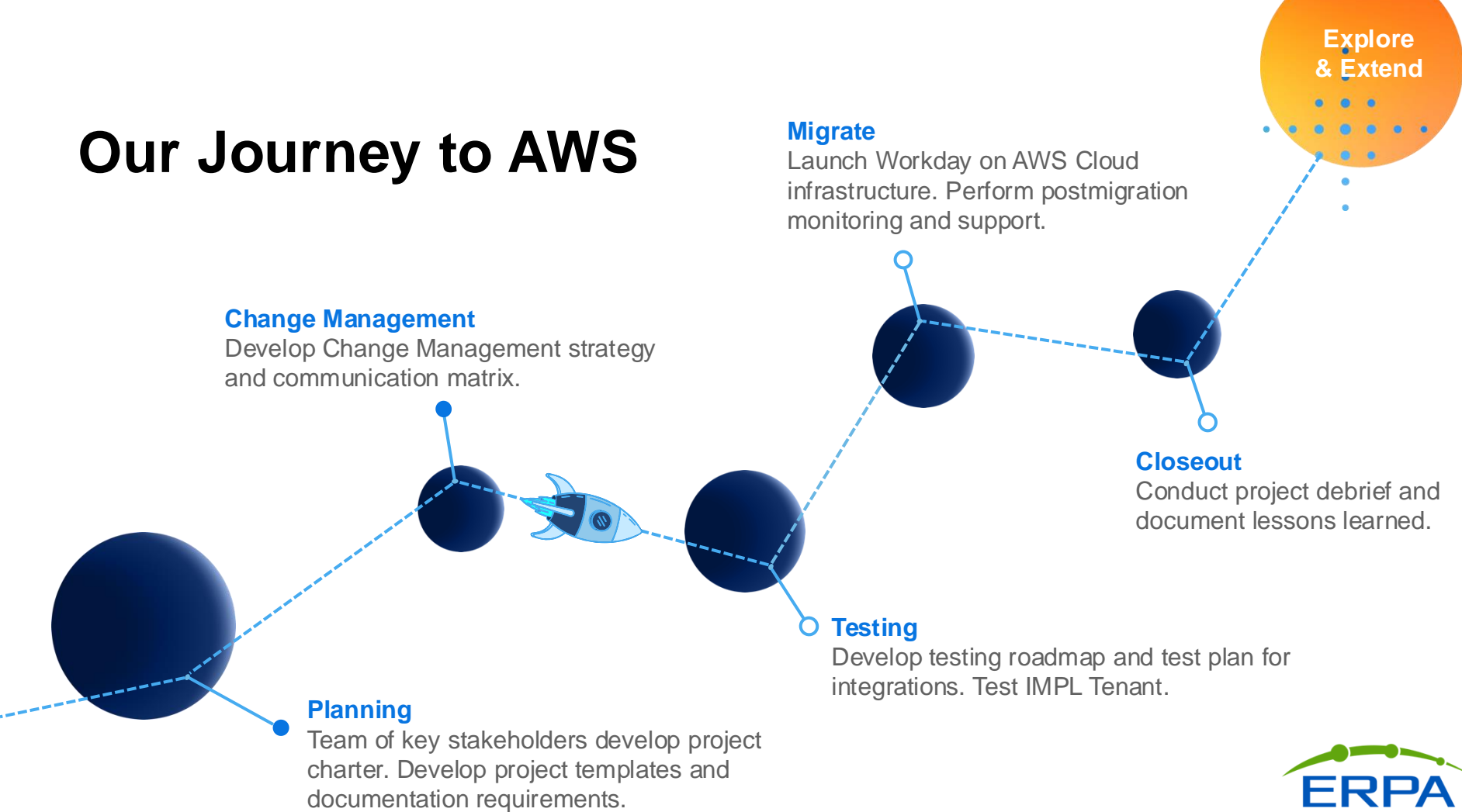
- Leverage your organization's AWS committed spend agreements to budget for Workday subscription
- Streamline procurement operations
- Consolidate billing for all your AWS workloads
- Negotiate higher Enterprise Discount Program (EDP) with AWS in the future (reducing operating cost/ROI)

Customer Tenant must be migrated to AWS if not currently hosted

# What to Expect - Cloud Migration Journey



# Our Journey to AWS



# *Your* Journey to the Public Cloud

## Discover

Introduce your team to our Workday-centric discovery process for the cloud migration.

## Educate

Educate your team on the cloud migration process, typical timeline, key considerations, and what to expect.

## Propose

ERPA submits a proposal to you for your Workday tenant migration (unless DIY).

## Confirm

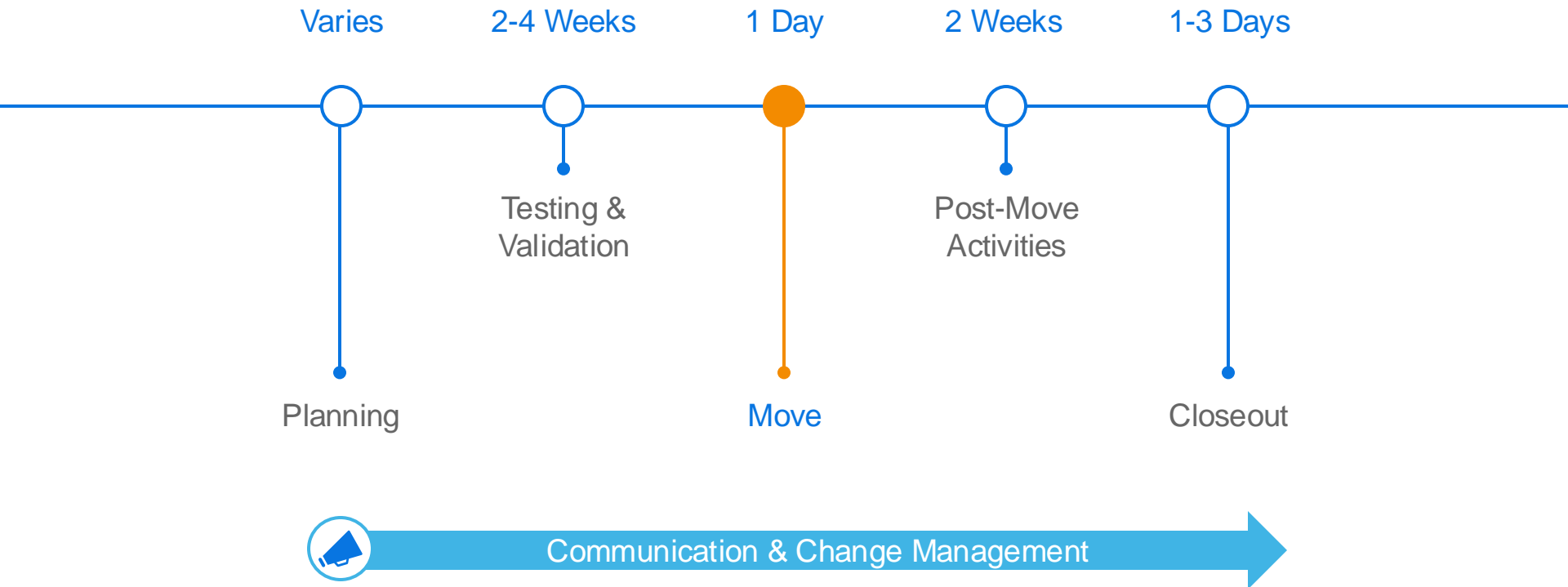
You receive a window confirmation from Workday to allow for project initiation.

## Request Migration

You will file a case in Workday Community to request approval to migrate your Workday tenant to AWS or GCP.

## Initiate

# Typical Timeframe to Expect






# Cloud Migration Service Packages



Packaged solutions for *your* unique needs and based on *our* lessons learned

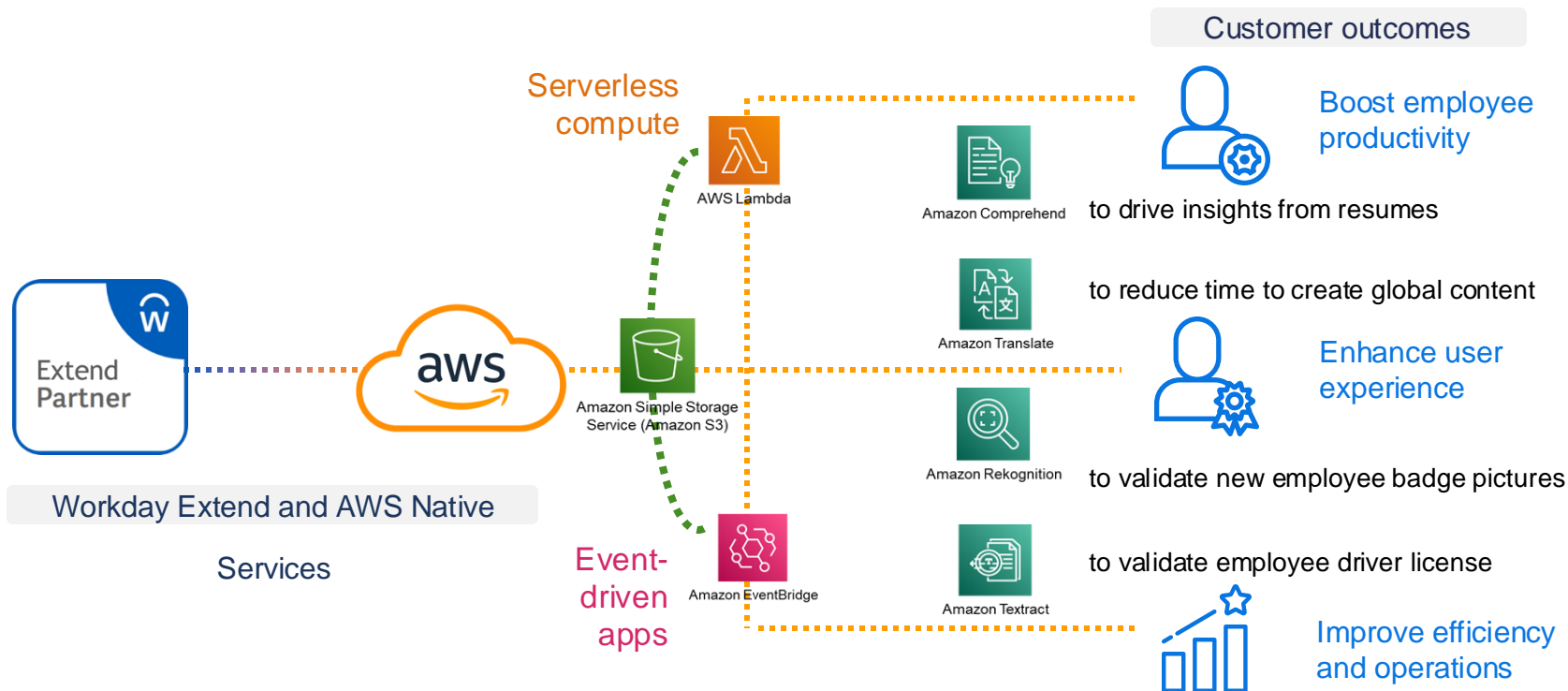
Features		 Stratus	Cumulus	Cirrus
Migrate	AWS Planning Workshop	•	•	•
	Custom Project Templates	•	•	•
	Change Management Roadmap	•	•	•
	Testing Roadmap	•	•	•
	Testing Enablement		•	•
	Post-Migration Support		•	•
Optimize	Workday Feature Adoption Workshop		•	•
	Tenant Health Check		•	•
	Art of the Possible – Workday & AWS			•
	Analytics & Reporting Workshop			•

 DIY – No Charge

# Beyond the Migration



# Extend Beyond



**Art of the Possible—Unlock the Power of Workday and AWS**

# Closing Remarks



# Top Three Takeaways



## Availability and compliance

Zero down-time patching,  
enhanced regulatory compliance,  
and ensured reliability



## Optimize costs

With Workday and AWS via  
marketplace and enterprise  
discount program (EDP)



## Accelerate innovation

Accelerate innovation with  
AWS native services like  
AI/ML and Workday Extend



**Please give feedback on this session via the mobile app or Attendee Portal.**

Each completed session survey entitles you to one entry to win one of thirty \$50 gift cards to the Workday Store!



# Thank You



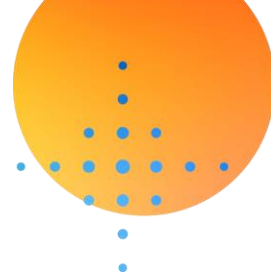
A27 Booth



[workday@ERPA.com](mailto:workday@ERPA.com)



[www.ERPA.com](http://www.ERPA.com)



# Want to Learn More?

Public Cloud Migration: <https://community-content.workday.com/content/workday-community/en-us/reference/get-help/support/public-cloud-migration.html>

Public Cloud Migration - Customer Checklist: <https://community-content.workday.com/en-us/reference/get-help/support/public-cloud-migration-customer-checklist.html>

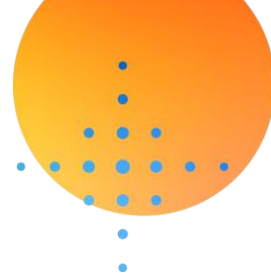
Public Cloud Migration FAQ: <https://community-content.workday.com/en-us/faq/get-help/support/public-cloud-migration-faq.html>

Public vs Private Cloud Architecture (Video): <https://community-content.workday.com/en-us/kits-and-tools/get-help/support/public-vs-private-cloud-architecture.html>

Public Cloud Migration - The Migration Process (Video): <https://community-content.workday.com/en-us/kits-and-tools/get-help/support/public-cloud-migration---the-migration-process.html>

Workday Podcast: The Benefits of Moving to the Public Cloud: <https://blog.workday.com/en-us/2024/workday-podcast-the-benefits-of-moving-to-the-public-cloud.html>





# **Missed a session or want to view the content?**

All recordings and PDFs of the presentation  
will be uploaded to the attendee portal



 | **RISING**

